

### SOFT-TISSUE CASE 27. PRESENTATION

A 55-year-old man with acute hepatitis B presented with right upper quadrant pain, ascites and jaundice. Abdominal ultrasonography (Fig. 1) demonstrated 3 focal hypoechoic masses in the region of the porta hepatis that were suspected to represent focal fatty sparing. Hepatocellular carcinoma was included in the differential diagnosis. What additional imaging technique would more accurately characterize the liver lesions?

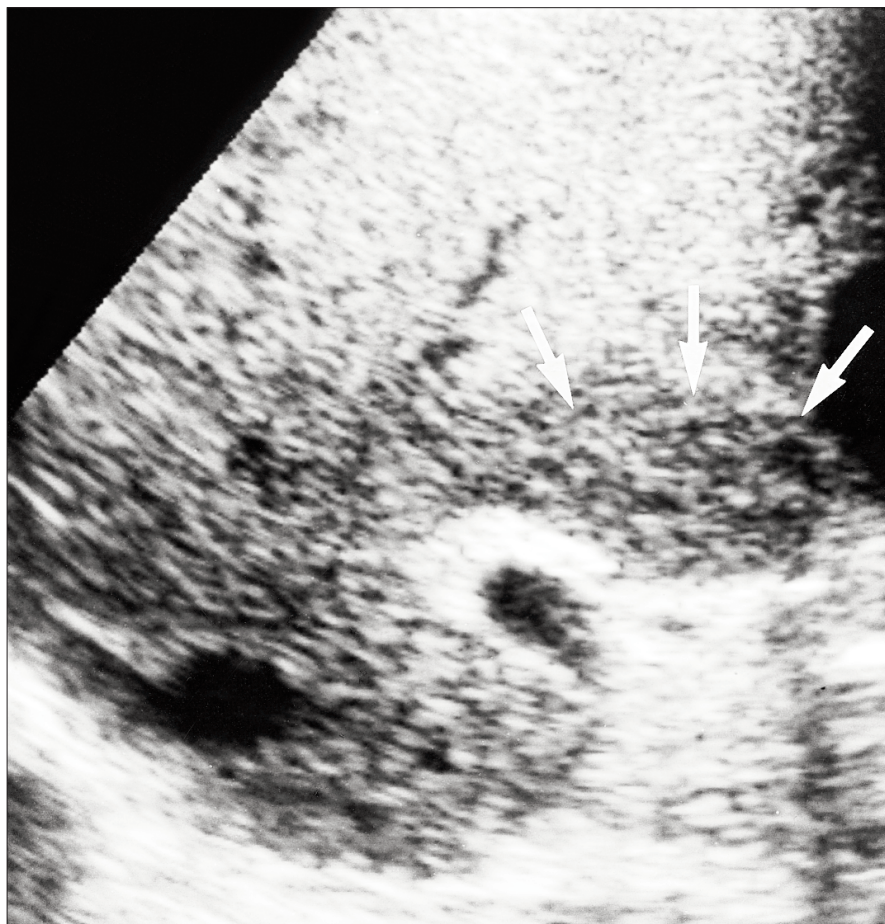
For the answer, see page 176.

*Section Editor: Lawrence A. Stein, MD*

*Submitted by: Roya Etemad-Rezai, BSc, MD,\*  
Alison R. Spouge, MD,\* Lisa M. Thain, MD,\* and  
Paul J. Marotta, MD,† \*Department of  
Radiology, and †Department of  
Gastroenterology, London Health Sciences  
Centre, University Campus, 339 Windermere  
Rd., London ON N6A 5A5*

*Submissions to Radiology for the Surgeon, soft-tissue section, should be sent to Dr. Lawrence A. Stein, Department of Diagnostic Radiology, Royal Victoria Hospital, 687 Pine Ave. W, Montreal QC H3A 1A1.*

**© 1999 Canadian Medical Association**



**FIG. 1**