

MUSCULOSKELETAL CASE 1: PRESENTATION

A 46-year-old woman presented with lateral joint-line discomfort and underwent magnetic resonance imaging. Coronal gradient echo images (Fig. 1) and T_1 -weighted

sagittal images (Fig. 2) were obtained. What diagnosis would you make?

For the answer, see page 466.



FIG. 1

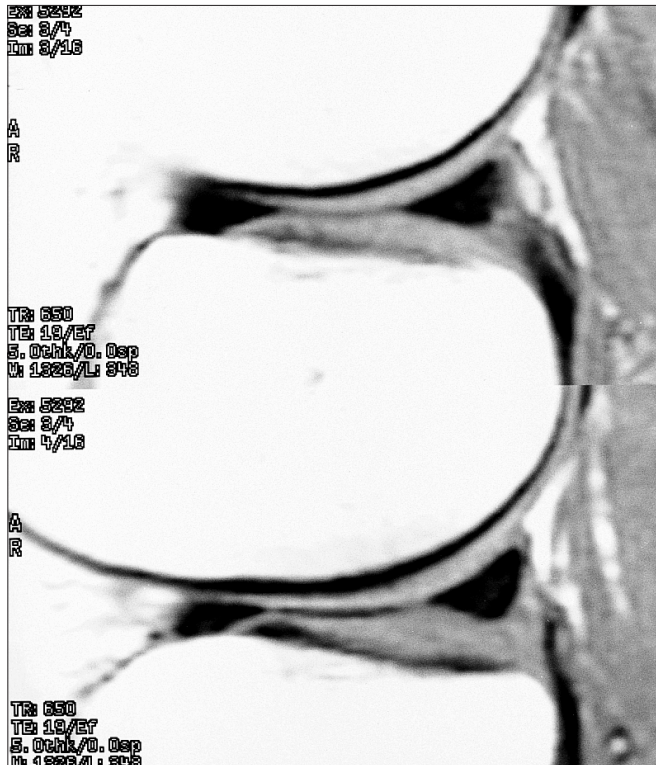


FIG. 2

Section Editor: Peter L. Munk, MD

Submitted by Mark J. Lee, BSc, and Peter L. Munk, MD, Department of Radiology, Vancouver General Hospital, Vancouver, BC

Submissions to Radiology for the Surgeon, musculoskeletal section, should be sent to Dr. Peter L. Munk, Professor, Department of Radiology, Vancouver General Hospital, Vancouver Hospital and Health Sciences Centre, 855 West 12th Ave., Vancouver BC V5Z 1M9.

© 1998 Canadian Medical Association