

SOFT-TISSUE CASE 32. PRESENTATION

A 29-year-old man was using a circular saw when a large piece of plywood was “kicked back” from the saw and struck him in the right lower quadrant of the abdomen. When seen in the Emergency Department he was hemodynamically stable. He had some

tenderness over the right anterior superior iliac spine with some superficial abrasions in that area. He was admitted overnight for observation. Because of persistent tenderness in the right lower quadrant an enhanced computed tomography scan of the ab-

domen and pelvis was obtained. Infusion CT scans of the abdomen are shown at presentation (Fig. 1) and 4 weeks later (Fig. 2).

Can you detect the abnormality?

For the answer and discussion see page 112.

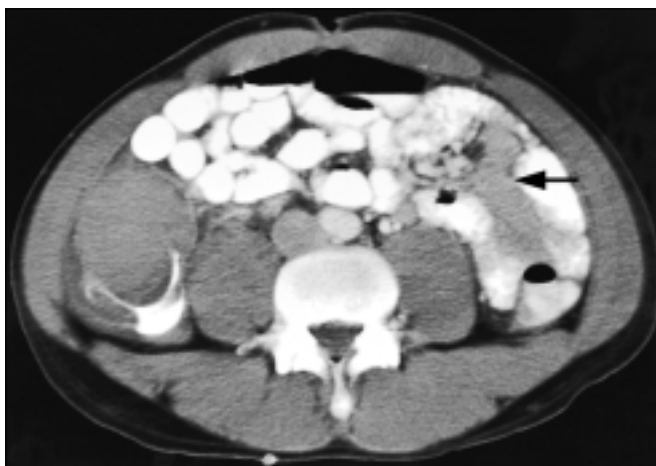


FIG. 1



FIG. 2

Section Editor: Lawrence A. Stein, MD

Submitted by Elijah Dixon, MD,* Barry Steed, MD,† Francis Sutherland, MD,* and Phillip Mitchell, MD,* from the *Department of Surgery and †Department of Radiology, Calgary General Hospital-Peter Lougheed Centre, University of Calgary, Calgary, Alta.

Correspondence to: Dr. Elijah Dixon, 11-1240 15th Ave. SW, Calgary AB T3C 0X5

Submissions to Radiology for the Surgeon, soft-tissue section, should be sent to Dr. Lawrence A. Stein, Department of Radiology, Royal Victoria Hospital, 687 Pine Ave. W, Montreal QC H3A 1A1.

© 2000 Canadian Medical Association

Diagnosis next page >>>