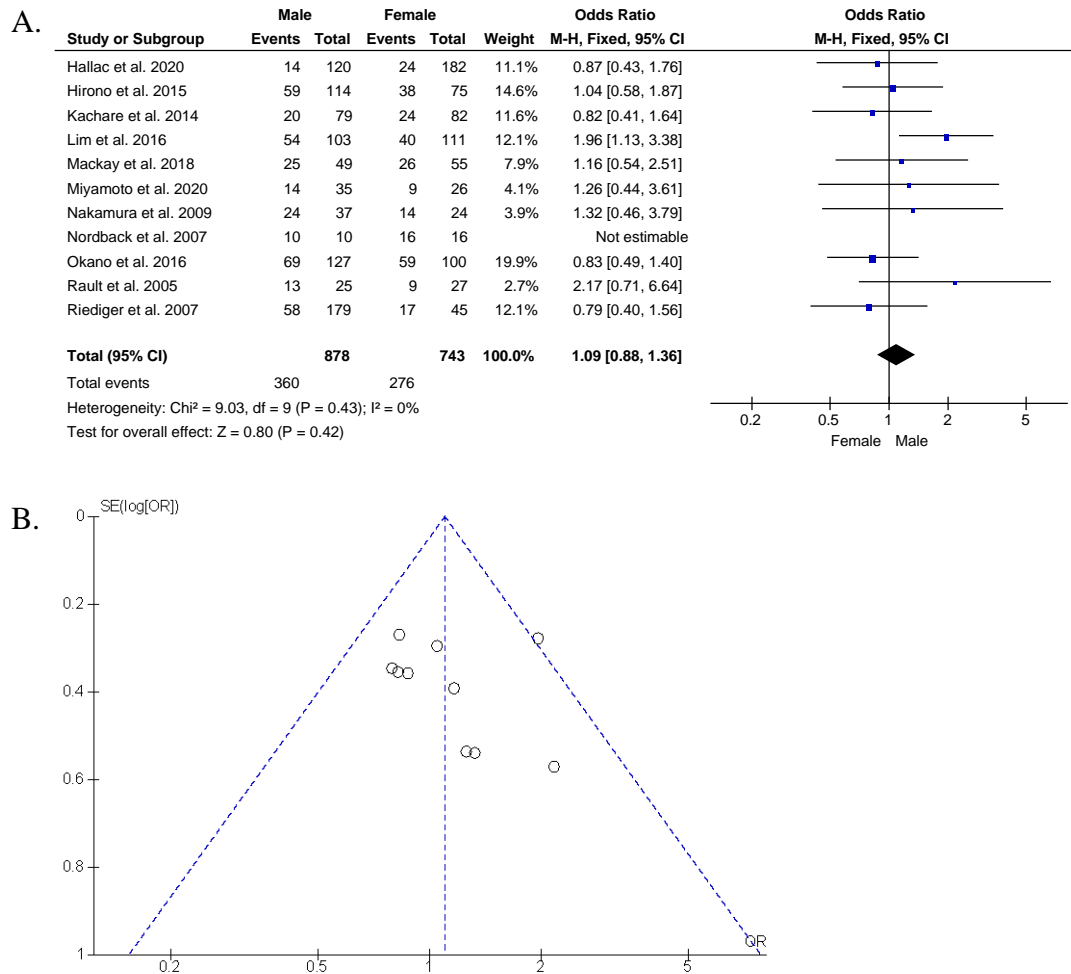
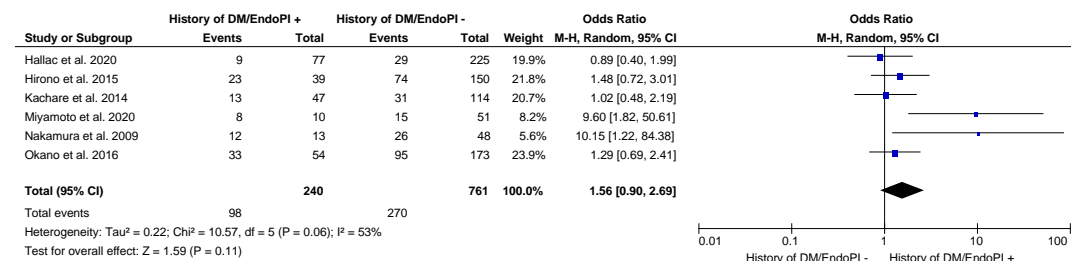


DOI: 10.1503/cjs.010621

Online appendices are unedited and posted as supplied by the authors.



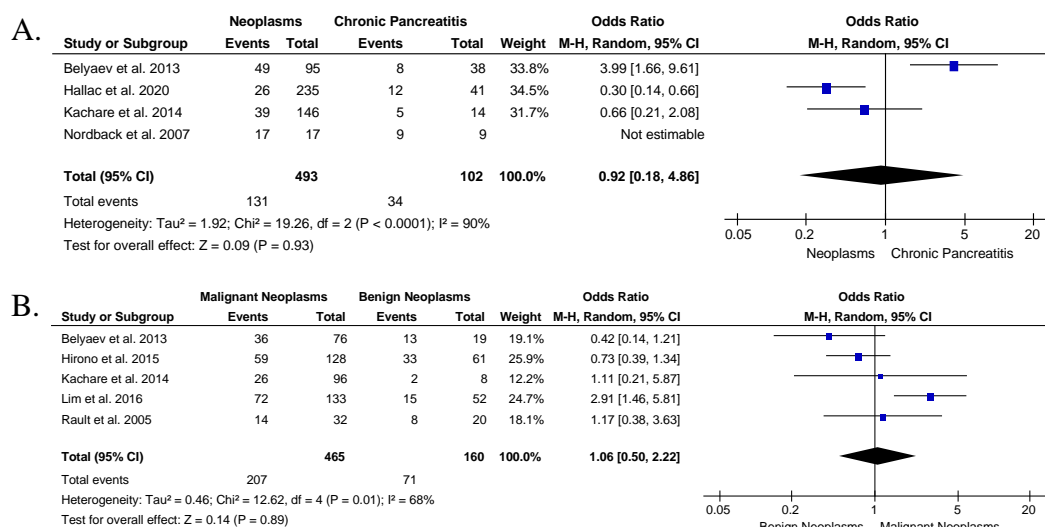
**Fig. S1.** Odds ratio (OR) of gender in patients with exocrine pancreatic insufficiency events after pancreatic surgeries (1,621 patients). **(A)** Forest plot, **(B)** Funnel plot.



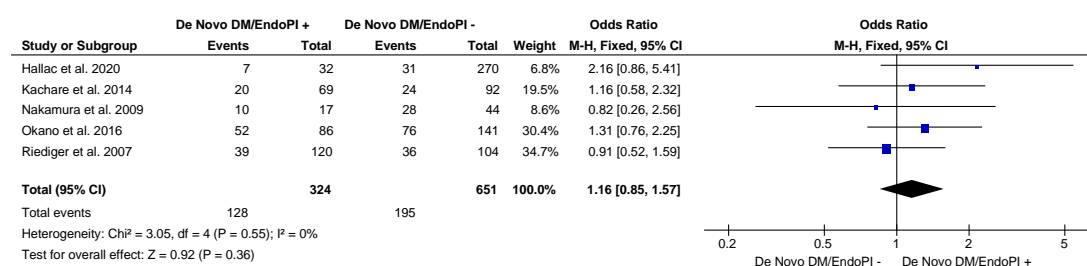
**Fig. S2.** Odds ratio (OR) of having a history of diabetes mellitus or endocrine pancreatic insufficiency in patients with exocrine pancreatic insufficiency events after pancreatic surgeries (1,001 patients).

DOI: 10.1503/cjs.010621

Online appendices are unedited and posted as supplied by the authors.



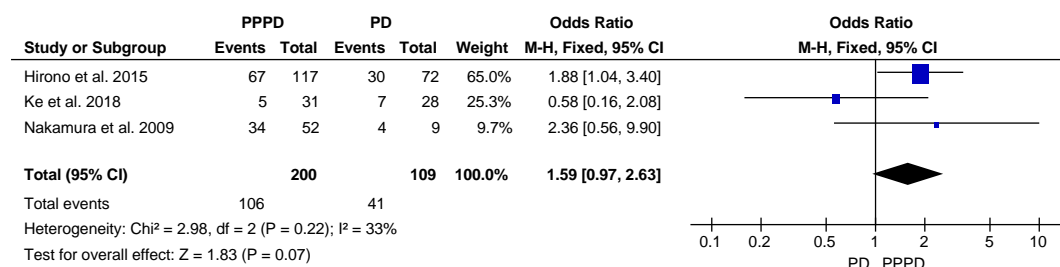
**Fig. S3.** Odds ratio (OR) of underlying preoperative disease in patients with exocrine pancreatic insufficiency events after pancreatic surgeries. **(A)** Neoplasms vs. CP, **(B)** Malignant vs. benign neoplasms.



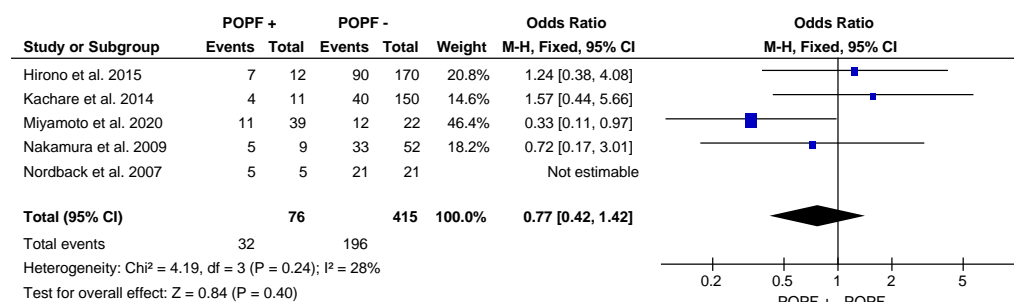
**Fig. S4.** Odds ratio (OR) of postoperative *de novo* diabetes mellitus or endocrine pancreatic insufficiency in patients with exocrine pancreatic insufficiency events after pancreatic surgeries.

DOI: 10.1503/cjs.010621

Online appendices are unedited and posted as supplied by the authors.



**Fig. S5.** Odds ratio (OR) of pylorus-preserving pancreaticoduodenectomy (PPPD) vs. pancreaticoduodenectomy (PD) in patients with exocrine pancreatic insufficiency events after pancreatic surgeries.



**Fig. S6.** Odds ratio (OR) of postoperative pancreatic fistula (POPF) in patients with exocrine pancreatic insufficiency events after pancreatic surgeries.